



M2MAX®

Up to 5-in-1 High Performance IP67 Antenna

A rugged outdoor antenna, M2MAX is designed to provide high performance connectivity for wireless machine-to-machine applications. This antenna mounts to virtually any M2M or IoT enabled asset and requires no servicing through its lifetime.

FEATURES

- Powerful MIMO technology
- Up to 2 x Wideband Cellular LTE elements
- Up to 2 x Wi-Fi 6 (2.4 & 5-6 GHz) elements
- Optional GNSS element
- IP67 ingress protection
- Available in black or white

ADVANTAGES

- Omni-directional radiation pattern provides uniform coverage
- Compatible with EZConnect™ Cable Harness
- 5 year limited warranty included¹
- Covered by one or more patents and pending applications²

¹See terms and conditions at <https://www.airgain.com/product-support/antenna-plus-product-support/>

²For a list of the patents covering this product please visit <https://www.airgain.com/patents/>

COMMON PART NUMBERS (Inquire to Airgain for other configurations)

CONFIGURATION	CELLULAR ELEMENTS	Wi-Fi ELEMENTS	GNSS	PART NUMBER	DESCRIPTION
5-in-1	2	2	Yes	AP-M2M2-CCWWG-[x]-S22222-RP34-BL-6	MIMO Cell/LTE x 2, Wi-Fi x 2 & GNSS, SMA on Cell/LTE & GNSS, RP-SMA on Wi-Fi, Black, 6 feet coax
4-in-1	2	1	Yes	AP-M2M2-CCWG-[x]-S2222-RP3-BL-6	MIMO Cell/LTE x 2, Wi-Fi x 1 & GNSS, SMA on Cell/LTE & GNSS, RP-SMA on Wi-Fi, Black, 6 feet coax
3-in-1	2	0	Yes	AP-M2M2-CCG-[x]-S222-BL-6	MIMO Cell/LTE x 2 & GNSS, SMA on Cell/ LTE & GNSS, Black, 6 feet coax
3-in-1	2	1	No	AP-M2M2-CCW-[x]-S222-RP3-BL-6	MIMO Cell/LTE x 2 & Wi-Fi, SMA on Cell/ LTE, RP-SMA on Wi-Fi, Black, 6 feet coax
3-in-1	1	1	Yes	AP-M2M2-CWG-[x]-S222-RP2-BL-6	Cell/LTE x 1 & Wi-Fi, SMA on Cell/LTE & GNSS, RP-SMA on Wi-Fi, Black, 6 feet coax
2-in-1	2	0	No	AP-M2M2-CC-[x]-S22-BL-6	MIMO Cell/LTE x 2, SMA on Cell/LTE, Black, 6 feet coax
2-in-1	1	0	Yes	AP-M2M2-CG-[x]-S22-BL-6	Cell/LTE x 1, SMA on Cell/LTE & GNSS, Black, 6 feet coax
2-in-1	0	2	No	AP-M2M2-WW-[x]-S22-RP-BL-6	Wi-Fi x 2, RP-SMA on Wi-Fi, Black, 6 feet coax
Single Wi-Fi	0	1	No	AP-M2M2-W-[x]-S2-RP-BL-6	Wi-Fi x 1, RP-SMA on Wi-Fi, Black, 6 feet coax

MOUNTING OPTIONS [x] (Must be mounted on metal)	DESCRIPTION
Q	Threaded Bolt Mount
A	Adhesive Mount
M	Magnetic Mount

Also available in color white. For mounting instructions please visit <https://www.airgain.com/installation-and-removal-guides/>.

TECHNICAL SPECIFICATIONS

Performance results are measured in a test chamber with 1' cables and over a 2'x2' ground plane, results are more reliable than data from software simulations

ELECTRICAL

Frequency Range	Elements 1 up to 2	689-960/1700-2700 MHz
	Elements 3 up to 4	2.4/4.9-6.0 GHz
	Element 5 (optional)	1550~1610 MHz
Operational Bands	Elements 1 up to 2	LTE/Cellular
	Elements 3 up to 4	Wi-Fi
	Element 5 (optional)	GPS L1/GALILEO E1/GLONASS G1/BeiDou B1/QZSS L1
Peak Gain: Isotropic	Elements 1 up to 2	698-960 MHz, 3 dBi
		1710-2700 MHz, 6 dBi
	Elements 3 up to 4	2.4 GHz, 6.5 dBi
		5.5 GHz, 4.2 dBi
Element 5 (optional)	30.50 dBi	
Isolation	Elements 1 up to 2	>10 dB
	Elements 3 up to 4	>30 dB
Correlation Co-efficient	Elements 1 up to 2	<0.1

ENVIRONMENTAL

Hazardous Substances	RoHS Compliant
Temperature	-40°C to 65°C (-40°F to + 149°F) Operating and Storage
Humidity (Non-Condensing)	5% to 96% Operating and Storage
Water Ingress	IP67
Military Spec	MIL-STD 810 conformance to vibration

MOUNTING

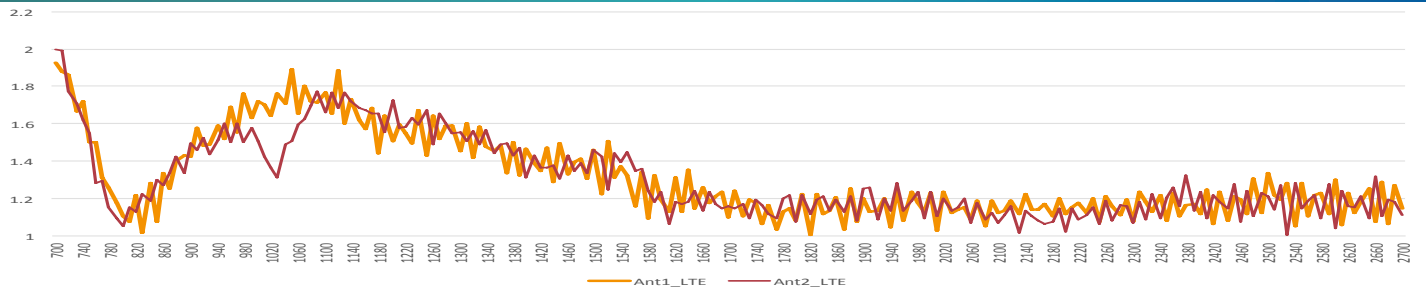
Dimensions	Height	2.19" (55.5mm)
	Width	2.56" (65mm)
	Length	4.84" (122.9mm)
Color	Black (BL) or White (WH)	

GNSS

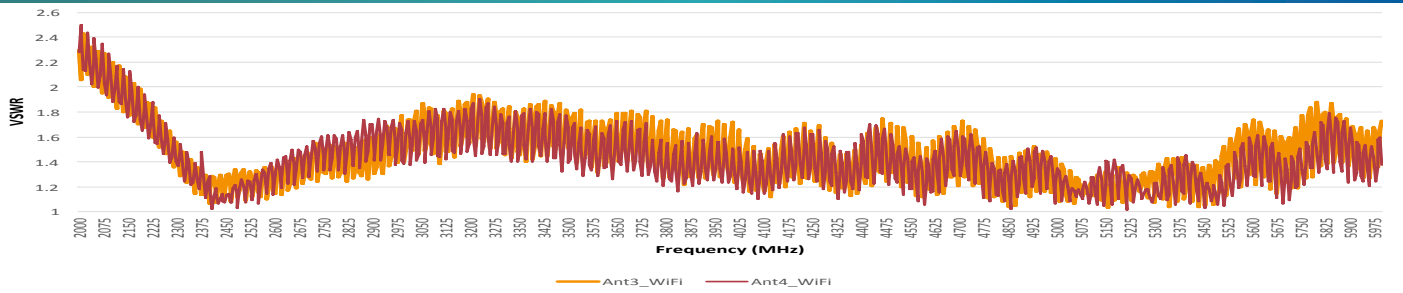
Ceramic Patch Antenna Specification	Bandwidth	1561-1602 MHz
	Gain@Zenith	2.5 dBi
	Polarization	R.H.C.P.
	Axial Ratio	3.0 dB Typ.
LNA Specification	Noise Figure	1.2 dB
	Gain	28 dBi
	Voltage	3.3V~5.6V
	Current	9.6±1mA@3.3V

Guidance for interpreting the data sheet is available on our website: <https://www.airgain.com/resources/datasheet-term-guide/>

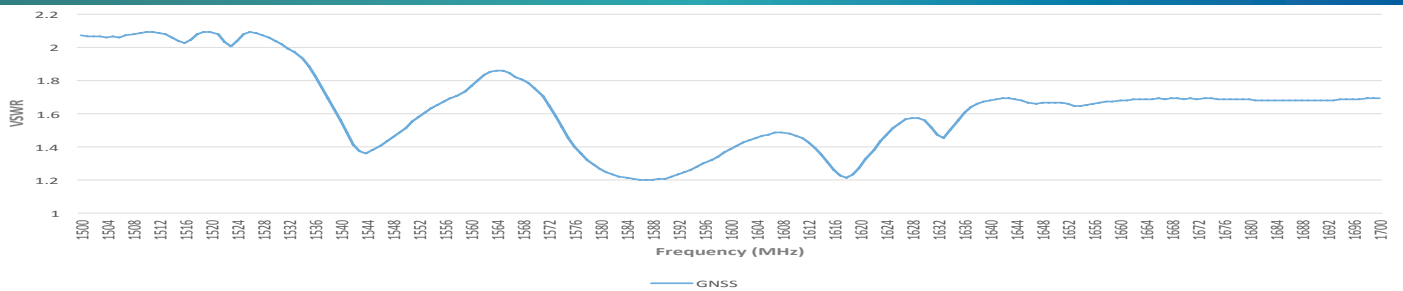
VSWR of LTE Antennas



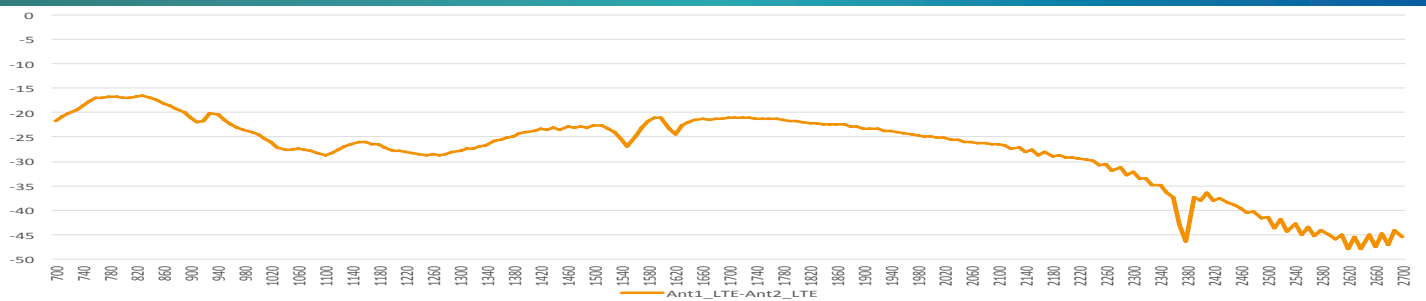
VSWR of Wi-Fi Antennas



VSWR of GNSS Antennas



Isolation of LTE Antennas



Isolation of Wi-Fi Antenna

